

CALIFORNIA Breast Cancer Research Program

# CBCRP's Special Research Initiatives

September 7, 2007


1

Special Research Initiatives

CALIFORNIA Breast Cancer Research Program

An \$18 million research effort to find answers to:

- What role does the environment play in breast cancer?
- Why do some groups of women bear a greater burden of disease?



2

Special Research Initiatives

CALIFORNIA Breast Cancer Research Program

**Background:**  
*Strategic Planning 2001 - 2004*

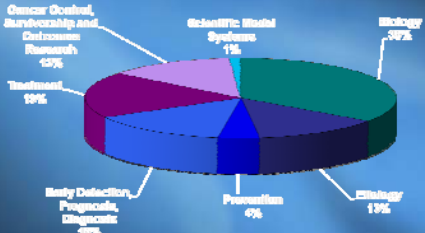
- Reviewed status of breast cancer research
- Reviewed program outcomes against program goals
- Reviewed status of breast cancer in California
- Expert presentations
- Commissioned position papers
- Stakeholder meetings

3

Special Research Initiatives

CALIFORNIA Breast Cancer Research Program

### CBCRP: The First Decade



Category	Percentage
Cancer Control, Survivorship and Outcomes Research	15%
Scientific Model Systems	1%
Biology	30%
Chemistry	19%
Prevention	6%
Early Detection, Prognosis, Diagnosis	19%
Treatment	19%

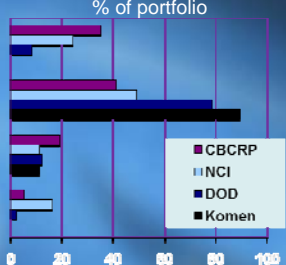
4

Special Research Initiatives

CALIFORNIA Breast Cancer Research Program

### Previous Funding Comparisons

% of portfolio



Category	CBCRP	NCI	DOD	Komen
2.1 - Exogenous Factors in the origin and cause of cancer	~35%	~25%	~15%	~10%
2.2 - Endogenous Factors in the origin and cause of cancer	~45%	~35%	~25%	~15%
2.3 - Interactions of Genes and/or Genetic Polymorphisms with Exogenous and/or Endogenous...	~25%	~15%	~10%	~5%
2.4 - Resources and Infrastructure Related to Etiology	~15%	~10%	~5%	~2%

5

Special Research Initiatives

CALIFORNIA Breast Cancer Research Program

### CBCRP: The Second Decade



Category	Percentage	Amount	Duration
Core Funding Program	70%	\$37.5m	over 5 years
Program Initiatives	30%	\$17m	over 5 years

IDEA  
Career Development  
Community-Initiated

Environment & Lifestyle  
Unequal Burden

6


Special Research Initiatives

CALIFORNIA Breast Cancer Research Program

## Rationale

California is uniquely positioned for large-scale research in these areas:

- Extensive research infrastructure
- Established cancer registry and pesticide databases
- Regional and geographic diversity
- Racial, ethnic, and socioeconomic diversity



Los Angeles at night: International Dark-Sky Association

7

Special Research Initiatives

CALIFORNIA Breast Cancer Research Program

## Vision and Goals

- **VISION:** to identify and support research strategies that increase understanding of, and create solutions to, environmental links to breast cancer and disparities in breast cancer.
- **GOALS:**
  - Support a coordinated statewide effort to explore innovative ideas and new theories
  - leverage California's unique and diverse geographic and population resources
  - undertake critical studies that significantly move these fields forward

8

Special Research Initiatives

CALIFORNIA Breast Cancer Research Program

## Qualities/Assumptions

- CBCRP has an implied mandate to take risks; this is the pool of money we are using for risk-taking (our core funding portfolio will continue to produce solid outcomes)
  - Be transparent and highly accountable
  - Involve scientists, advocates, and clinicians
  - Provide a variety of opportunities for public input
  - Ensure scientific credibility by involving respected scientists and basing the identification of research priorities on current scientific knowledge and knowledge gaps
  - Clearly separate the identification of research priorities from funding decisions

9

Special Research Initiatives

CALIFORNIA Breast Cancer Research Program

## The Five Phases of the SRI Strategy Development Plan



10

Special Research Initiatives

CALIFORNIA Breast Cancer Research Program

## Phase I: Leadership

Recruited and formed a steering committee to provide guidance

<p>Julia G. Brody, PhD Silent Spring Institute</p> 	<p>Susan Matsuko Shinagawa Asian and Pacific Islander National Cancer Survivors Network</p> 
<p>Olufunmilayo I (Funmi) Olopade, MD University of Chicago, Medical Center</p> 	<p>David R. Williams, PhD Harvard University</p> 
<p>Sandra Steingraber, PhD Ecologist, author, cancer survivor</p> 	<p>Marion Kavanaugh -Lynch, MD, MPH California Breast Cancer Research Program</p> 

11

Special Research Initiatives

CALIFORNIA Breast Cancer Research Program

## Phase II: Assessing Gaps and Promising Opportunities

**Produced:**

"Identifying Gaps In Breast Cancer Research: Addressing Disparities and the Role of the Physical and Social Environment"

- 50 writers and science editors
- 500+ pages
- 1800+ citations
- 295 recommendations

12

Special Research Initiatives

CALIFORNIA Breast Cancer Research Program

### Phase III: Stakeholder Engagement

- Informed California stakeholders and engaged them in identifying research strategies
  - Regional in-person meetings and teleconferences (3/26/07 – 4/12/07)
  - Web Site
  - CBCRP e-newsletter
- Began to sign up interested investigators in a resource database.

13

Special Research Initiatives

CALIFORNIA Breast Cancer Research Program

### Phase IV: Strategy Development

Brainstorm, prioritize and develop strategies to significantly advance our understanding of the role of the environment and lifestyle in breast cancer, and the unequal burden of breast

- Brainstorming complete
  - Approximately 600 ideas generated through stakeholder meetings, teleconferences, state of the science review, and e-alerts through numerous organizations and listserves.
- Prioritization is nearing completion
  - Approximately 500 people invited to conduct a straw poll of a representative set of 98 ideas.
  - 40 person Strategy Team will now finalize prioritization and begin to develop strategies for most impactful and most unique to California

14

Special Research Initiatives

CALIFORNIA Breast Cancer Research Program

### Phase V: Adopt Strategies

CBCRP Advisory Council in March 2008 will choose specific strategies for CBCRP to implement that will significantly advance our understanding of the role of the environment and lifestyle in breast cancer, and the unequal burden of breast cancer.

15

California Breast Cancer Research Program

CALIFORNIA Breast Cancer Research Program

## Brainstorming, Sorting and Rating

### Phase IV Work to Date

16

Special Research Initiatives

CALIFORNIA Breast Cancer Research Program

### SRI Involvement:

Which of the following best describes your involvement in this project?

Involvement Category	Percentage
All Other Stakeholders	58%
CBCRP Advisory Council	11%
SRI Strategy Team member	14%
SRI Science Editor/Reviewer	4%
SRI Steering Committee	3%

N=151

17

Special Research Initiatives

CALIFORNIA Breast Cancer Research Program

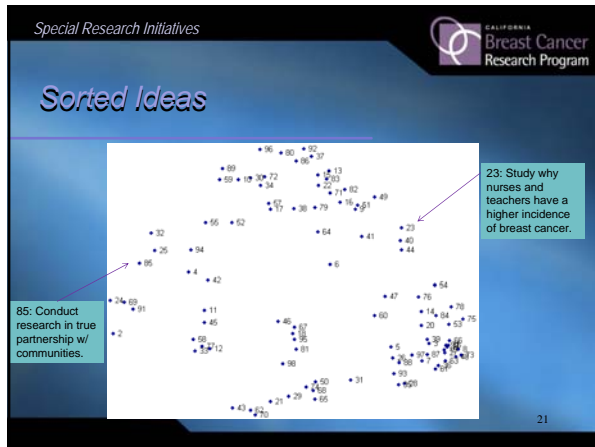
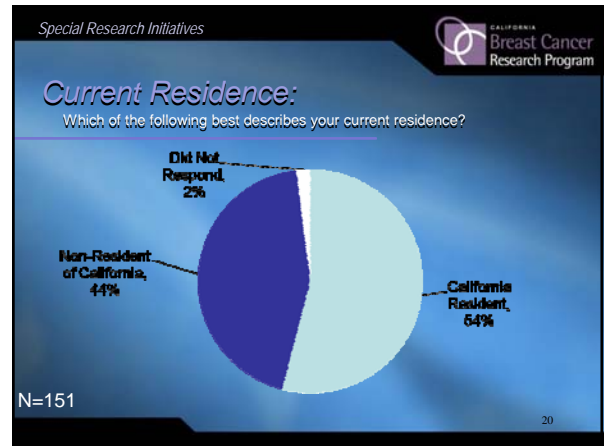
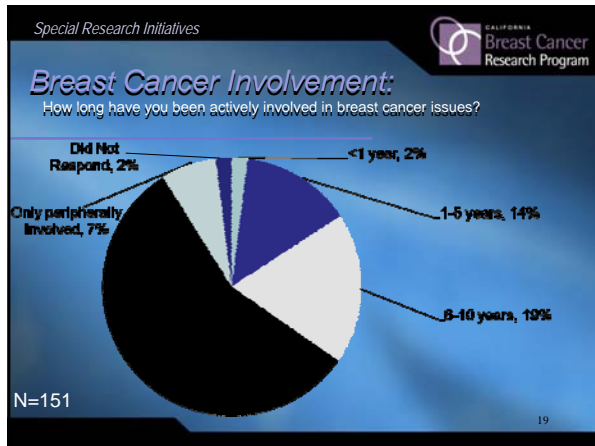
### Relation to Breast Cancer:

Which of the following characterized your role in relation to breast cancer?

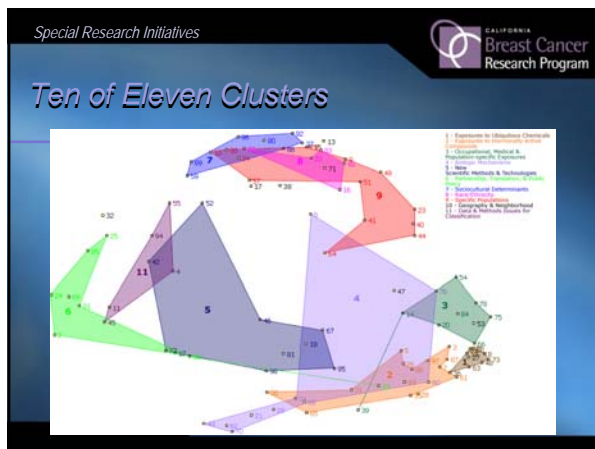
Role Category	Percentage
Researcher	47%
Survivor/Advocate	17%
CBO representative	11%
Other community member	7%
Public/Gov't official	7%
Healthcare Provider	6%
Did Not Respond	2%

N=151

18



- Special Research Initiatives
- CALIFORNIA Breast Cancer Research Program
- ### Ideas Organized into Groups
1. Exposure to Ubiquitous Chemicals
  2. Exposures to Hormonally Active Compounds
  3. Occupational, Medical and Population-Specific Exposures
  4. Biologic Mechanisms
  5. New Scientific Methods and Technologies
  6. Partnership, Translation and Public Policy
  7. Sociocultural Determinants
  8. Race/Ethnicity
  9. Specific Populations
  10. Geography and Neighborhood
  11. Data and Methods Issues for Classification
- 22



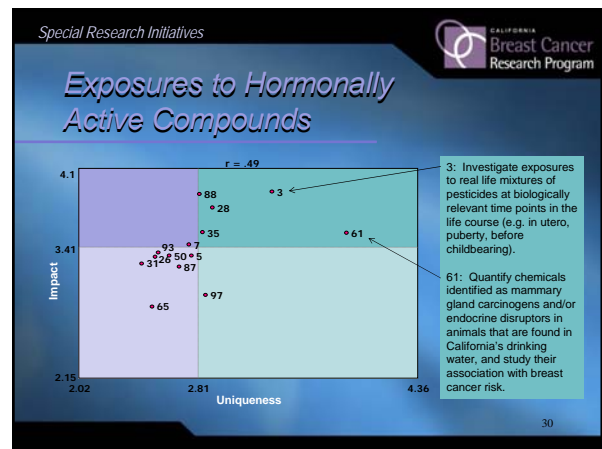
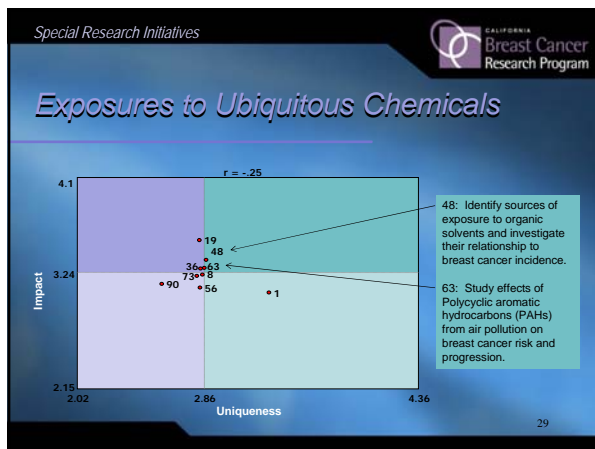
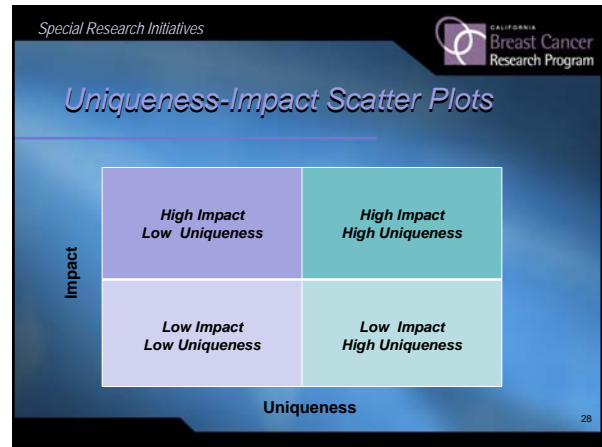
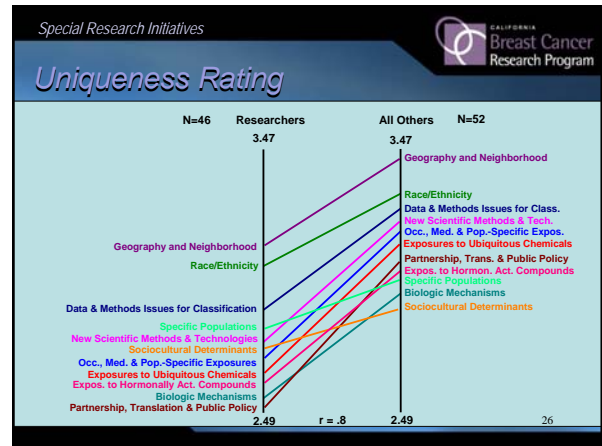
Special Research Initiatives

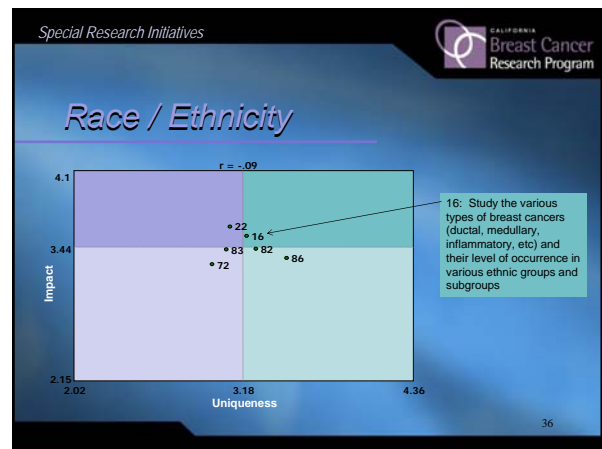
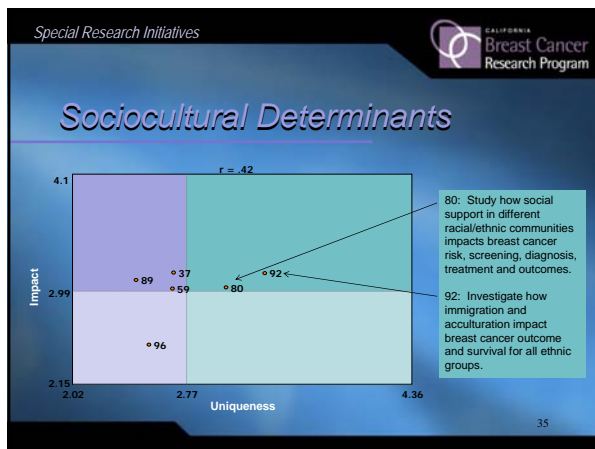
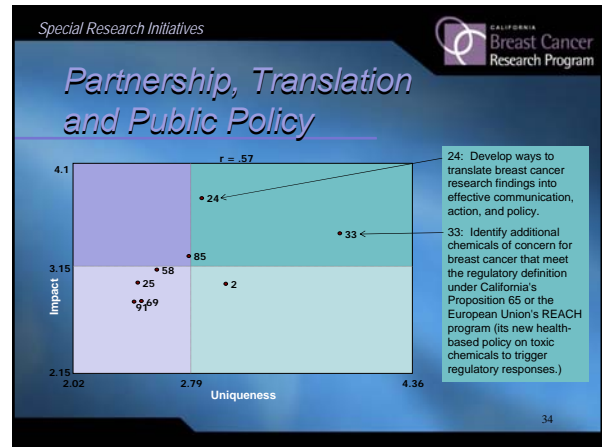
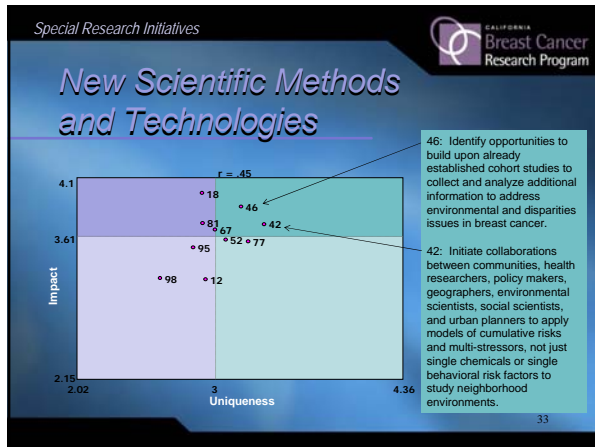
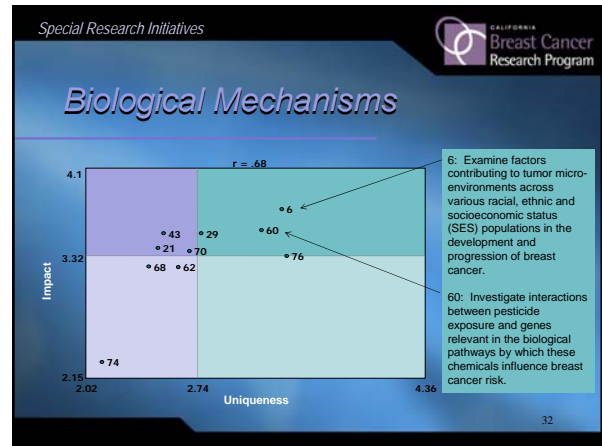
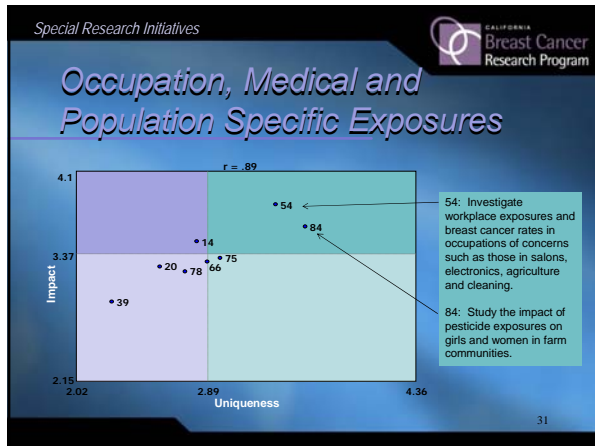
CALIFORNIA Breast Cancer Research Program

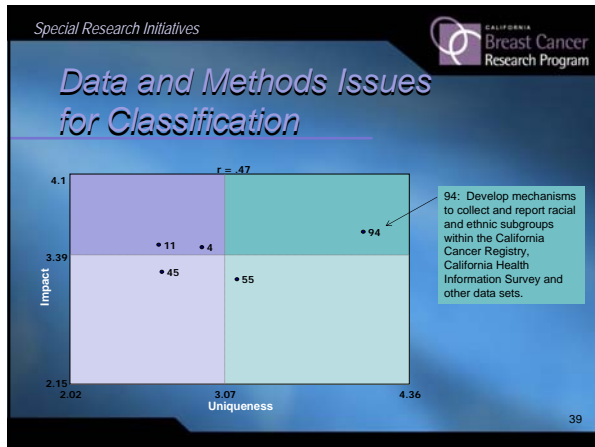
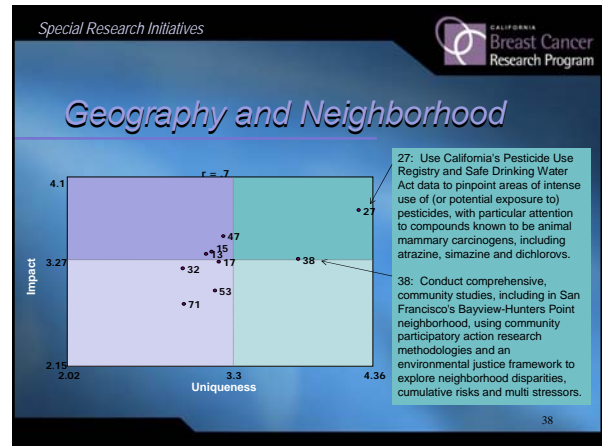
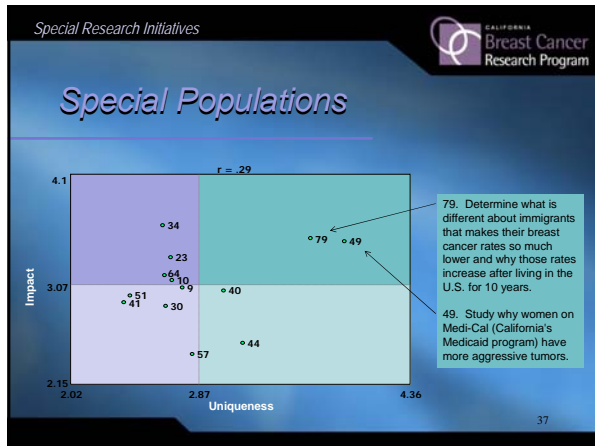
## Rating Scales

- Impact:** Potential to create significant solutions to the environmental causes and/or reduce the unequal burden of breast cancer  
1= little potential, 2= some potential, 3=average potential, 4= high potential, 5= extremely high potential
- Uniqueness:** Degree to which this idea is uniquely suited to California's geography, diversity, and/or research resources  
1=not at all unique, 2=somewhat unique, 3=unique, 4=very unique, 5=extremely unique
- Feasibility:** Feasibility of implementing each research idea or approach  
1=not at all feasible, 2=somewhat feasible, 3=feasible, 4=very feasible, 5=extremely feasible

25







Special Research Initiatives

CALIFORNIA Breast Cancer Research Program

[www.CABreastCancer.org](http://www.CABreastCancer.org)

- Download copy of "Identifying Gaps In Breast Cancer Research: Addressing Disparities and the Role of the Physical and Social Environment"
- Sign up as a community or academic researcher
- Share your thoughts

Point Map, Pattern Match and Scatter plot graphics originally produced by Concept Systems, Inc.

40