

Breast Cancer in Young Women

September 7, 2007
Los Angeles, California

Breast Cancer in Young Women

John Link, M.D.
Carey Cullinane, M.D., M.P.H.
James Waisman, M.D.
Heather Himmelwright

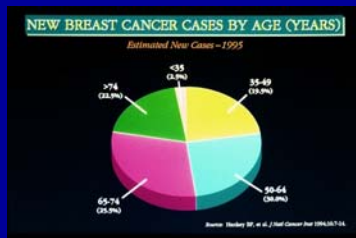
Issues

- Definition of "Young"
- Is the disease different in young women?
- Special considerations for young women
 - fertility
 - ovarian suppression
 - cancer during pregnancy
 - genetic issues
 - over treatment

Age and Breast Cancer

- 250,000 new cases annually
- 25% less than 50 (65,000)
- 5% less than 40 (12,000)
- 2.5% less than 30 (6000)

The Numbers



Characteristics of Cancers in Young Women

- Heterogeneous
- BCRA positive
- More Triple negative
- Less Hormone positivity

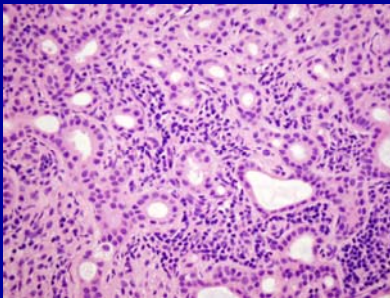
New Classification based on gene microarray

- Normal ductal genome
- Luminal cell A
- Luminal cell B
- Basal cell or “triple negative”
- Her 2 positive

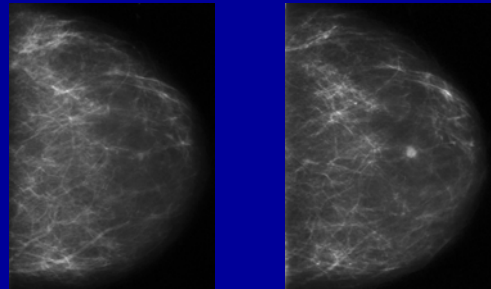
Luminal A

- 40%
- Mammographically detected
- Low grade
- Ductal
- ER positive
- Excellent prognosis

Luminal A



Luminal A

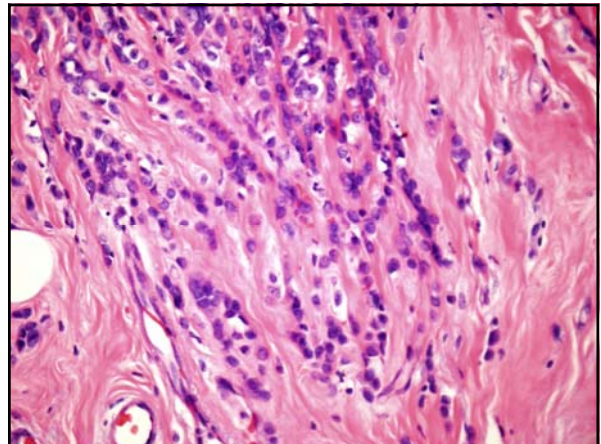


2003

2004

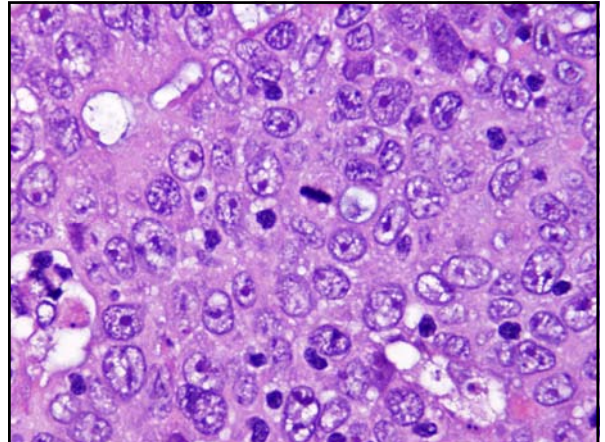
Luminal B

- Ductal or lobular
- 25%
- Intermediate grade
- Less ER positivity
- Higher proliferative rate
- Intermediate prognosis



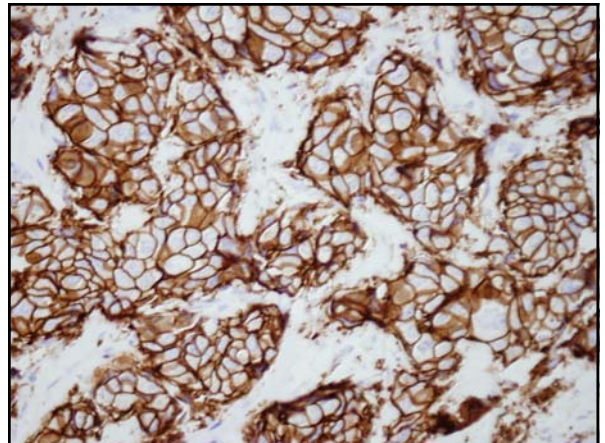
Basal Cell Type

- Triple negative
- 20%
- Younger age
- High grade / high proliferative
- Poor prognosis
- Chemotherapy sensitive

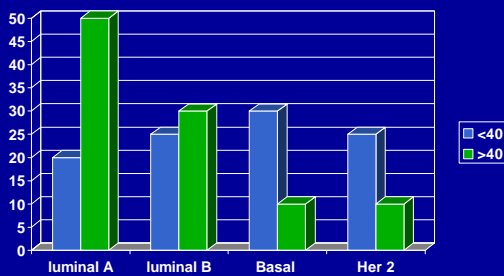


Her 2 Positive

- 15 to 20%
- Both ER + and negative
- Poorer prognosis
- New Agents
 - herceptin
 - lapatinib



Breast Cancer Types and Age



Differences

- Young women present with clinical breast cancer
- Higher incidence of ER negative BC
- Higher incidence of hereditary BC
- Pregnancy